

Customer :

customer

Customer part :

customer part

Comment :

Comment

S1=2.42

S2=3.18

Tmax=462

Tp S2=501.0

PI=0.43

HI=89

Sample =1723.30

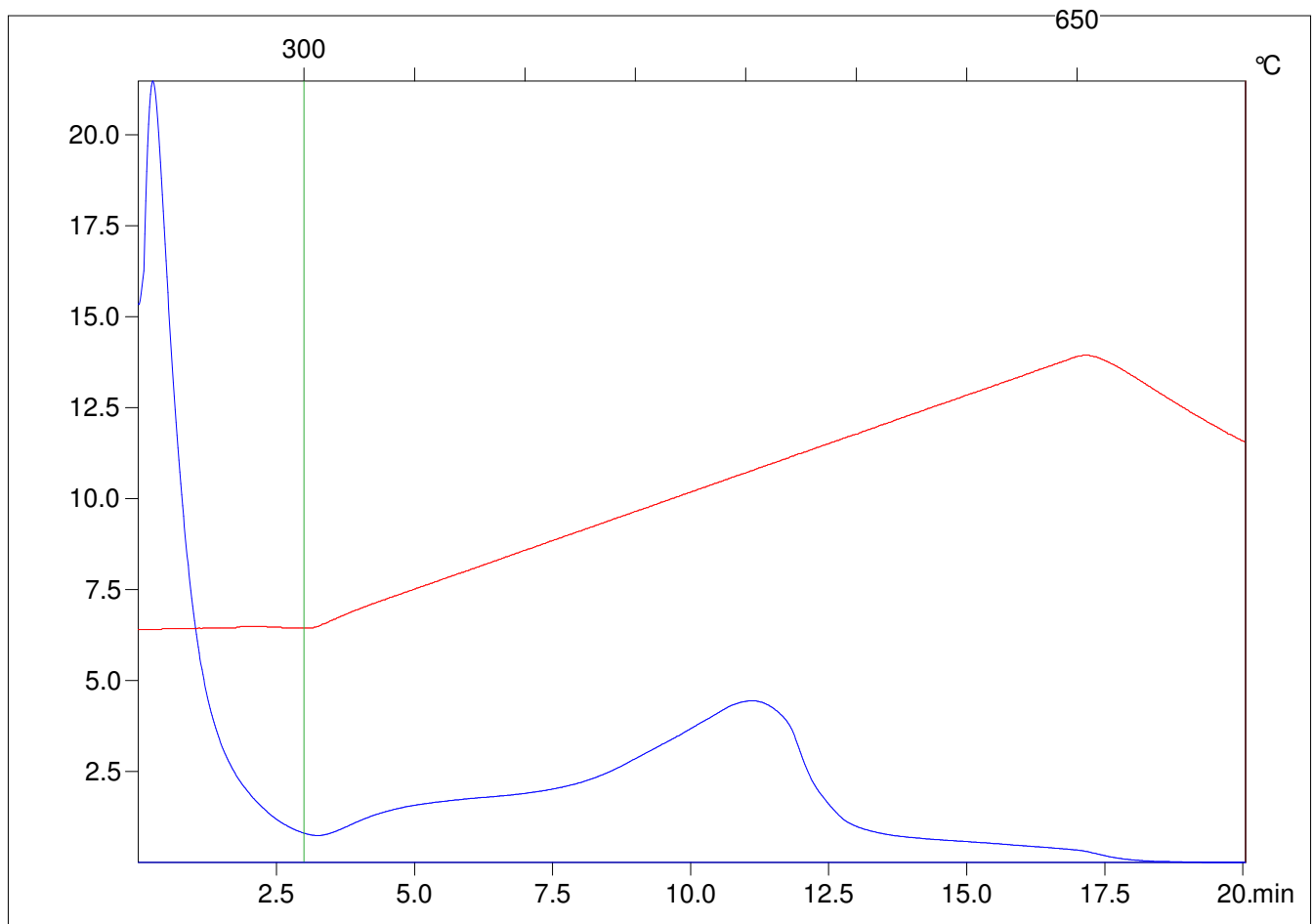
Method =Bulk Rock

Cycle=Basic

KFID(10*9)=1444

Qty =70.7

TOC=3.57



C:\VINC\PK2_1792\PK034.R00 : FID pyrolysis graphic

State

Pyro Status

Oxi Status